

# S45

## Quick coupler 5-12 tonnes

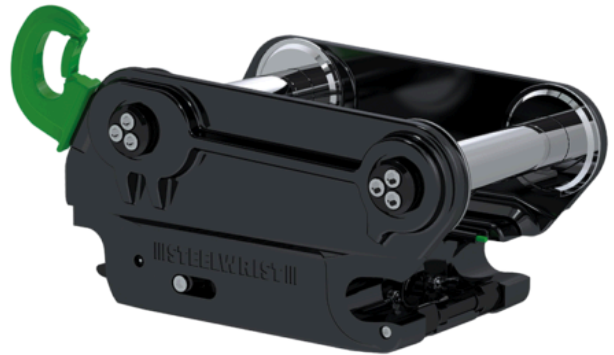


Steelwrist symmetrical quick couplers are unique. No other manufacturer cast the entire quick coupler in steel and includes front pin locking as standard for maximum safety. We also include Expander pins so that we create a truss structure taking up the lateral forces that comes when you start using a tiltrotator.

The advantage of casting in steel is that materials can be optimized where needed (for example, contact surfaces to pins in order to minimize the pressure per square mm) and eliminate material where it is not needed. The result is an unrivaled relation between strength and weight.

With Front Pin Lock you are safe during tool changes regardless of control system, the size and age of your excavator. A simple mechanical solution that protects against the most common risk, i.e. that you by mistake connect the rear pin in the wrong way without noticing it. Read more about the Front Pin Lock here.

Unlike traditional solutions that only indicates that the lock is open (or modern sensor-based solutions that indicates when you are not connected correctly), Steelwrist Front Pin Lock solves both problems. We indicate red when the lock is open and green when the bucket is in a secured position. In addition, we ensure that you do not drop a bucket even if you made a mistake in the coupling process. As long as you have the front pin in the front jaw (the one that you see from the cabin) then you are safe even if you locked above the rear pin. In a way, one can say that our solution is both a “warning” and an “airbag” when our competitors a “warning light”.



### Measurement

<b>Building height (mm)</b>	120
<b>Weight (kg)</b>	70
<b>Width (mm)</b>	290
<b>Length (mm)</b>	430
<b>Shaft diameter dipper (mm)</b>	45-60
<b>Width dipper arm (mm)</b>	150-228
<b>Pin distance (cc-measure (mm))</b>	220-365

### Technical specification

<b>Recommended machine weight (tonnes)</b>	5-12
<b>Lifting hook (tonnes)</b>	3
<b>Front Pin Lock</b>	Yes
<b>Body</b>	Casted